

FIREFLY BRONZE GLOBE VALVE THREADED ENDS

175PSI

Fig No.: BGVT

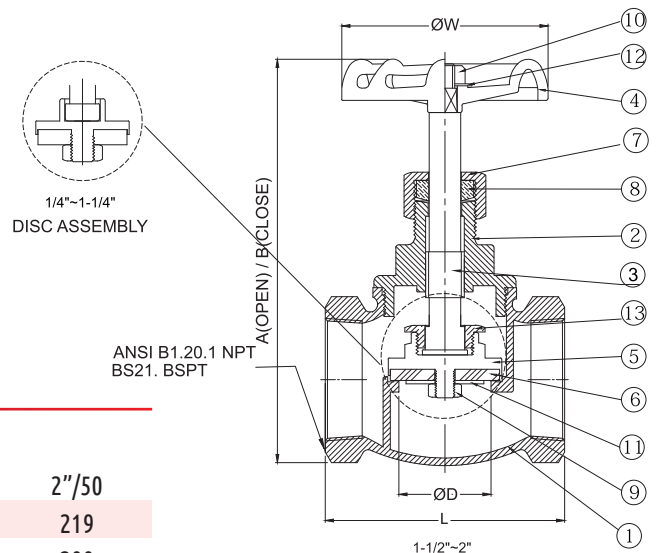
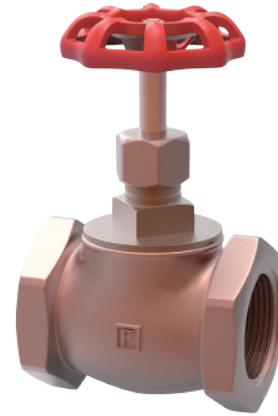
FEATURES & SPECIFICATIONS

- Threaded ends : NPT or BSPT
- Working pressure : 175psi



MATERIALS LIST

No.	Name	Material
1	Body	Bronze C84400
2	Bonnet	Brass C37700(1/4"~3/4") Bronze C84400(1"~2")
3	Stem	Brass
4	Handwheel	Cast Iron
5	Disc Holder	Brass(1/4"~1/4") Forged Brass(1 1/2"~2")
6	Seat	BUNA-N
7	Packing Nut	Brass
8	Gland Packing	PTFE
9	Lock Nut	Brass
10	Wheel Nut	Steel
11	Washer(1 1/2"~2")	Brass
12	Name Plate	Aluminum
13	Disc Nut(1 1/2"~2")	Brass



DIMENSIONS (mm)

Size	0.5"/15	0.75"/20	1"/25	1.25"/32	1.5"/40	2"/50
A	99	103	130	166	181	219
B	90.5	98	119	151.5	165	200
L	54.7	60.5	77	91.8	101.5	116.5
ØW	58	58	74	78.5	78.5	99
ØD	13.5	16.5	23	28	34	45

NET WEIGHT (kg) & CRATE QTY (pcs)

Size	0.5"/15	0.75"/20	1"/25	1.25"/32	1.5"/40	2"/50
N.W.	0.32	0.41	0.82	1.19	1.50	2.30
Crate Qty	80	60	30	24	18	12