

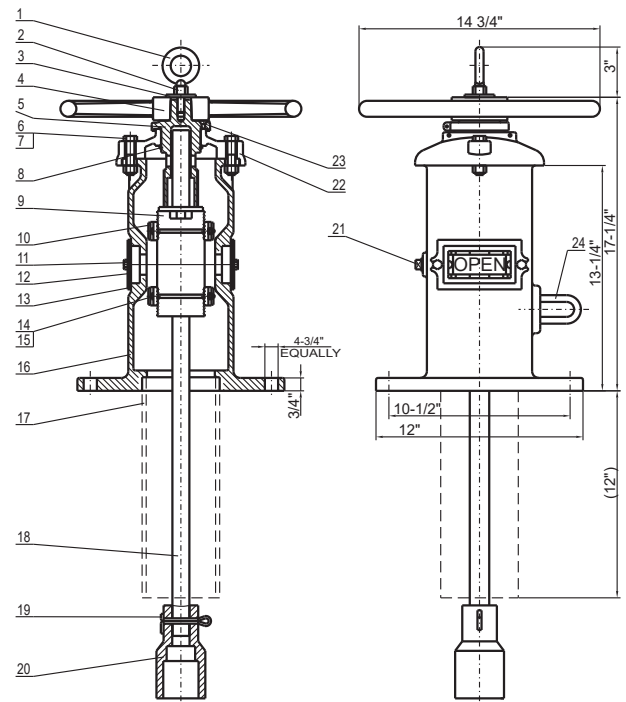
INDICATOR POST WALL TYPE

Fig No.: WPO999



MATERIALS LIST

No.	QTY.	Name	Material
1	1	Lifting Eye Bolt	ASTM A105
2	1	Hex Nut	ASTM A105
3	1	Washer	ASTM A105
4	1	Hand Wheel	ASTM A536
5	1	Operating Nut	ASTM B62
6	2	Hex Cap Screw	ASTM A105
7	2	Hex Nut	ASTM A105
8	1	Snap Ring	AISI 066
9	1	Target Carrier Nut	ASTM B62
10	4	Target	ASTM B108
11	4	Hex Cap Screw	ASTM A105
12	2	Window Glass	LEXAN-UM
13	2	Window Glass Gasket	PTFE
14	4	Hex Cap Screw	ASTM A105
15	4	Hex Nut	ASTM A105
16	1	Body	ASTM A536
17	1	Stand Pipe	ASTM A53
18	1	Stem	AISI 1045
19	1	Cotter Pin	AISI 304
20	1	Crane Coupling	ASTM A536
21	1	Plug	AISI 304
22	1	Cover	ASTM A126B
		Cross Recessed	
23	1	Countersunk Head	AISI 304
		Screw	
24	1	Locking Nose	ASTM 307B



FIELD ADJUSTMENT

1. Remove the top section from the top of the Indicator Post assembly.
2. Set the "OPEN" and "SHUT" targets for the appropriate valve size.
3. Reattach the Top Section to the top of the Indicator Post assembly.