

# AWWA C504 DOUBLE FLANGE BUTTERFLY VALVE

CLASS 150 F13A-150



## FEATURES & SPECIFICATIONS

- Concentric double flange
- Comply with AWWA C504
- Higher strength for disc with pinned single shaft ensure optimal alignment
- Can be installed at horizontal or vertical pipe line
- Flange drilled to ANSI Class 150

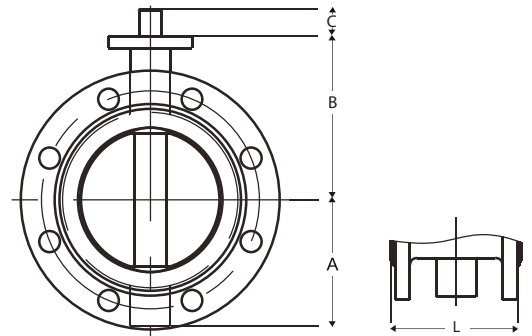


## PRESSURE & TEMPERATURE RATINGS

Working Pressure	150 psi
Shell Test Pressure (x2.0)	300 psi
Seat Test Pressure (x1.1)	165 psi
Working Temperature	-4°F ... 203°F (EPDM) 14°F ... 176°F (NBR)
Suitable Media	Water, Oil & Gas

## MATERIAL SPECIFICATIONS

Part	Material
Body	Ductile Iron
Disc	Ductile Iron Aluminium Bronze Stainless Steel 304 Stainless Steel 316
Shaft	Stainless Steel 410 Stainless Steel 431
Seat Ring	EPDM NBR
O-Ring	EPDM NBR
Bushing	Bronze



## DIMENSIONS

DN	(mm)	80	100	150	200	250	300	350	400	450	(mm)
	(inch)	3	4	6	8	10	12	14	16	18	
A		3.82	4.69	6.14	7.36	8.2	9.86	11.42	12.63	13.52	
B		5.16	5.91	7.09	8.27	9.67	10.83	12.91	14.8	16.01	
C		1.18	1.18	1.26	1.57	1.97	1.97	1.97	2.76	3.35	
L		5	5	5	6	8	8	8	8	8	

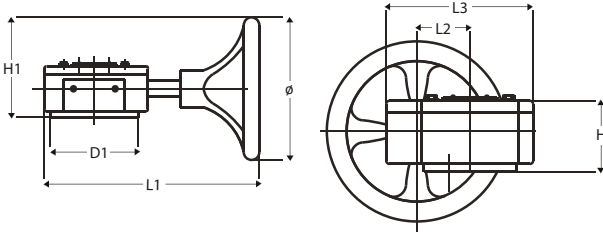
DN	(mm)	500	600	750	900	1050	1150	1200	1350	1500
	(inch)	20	24	30	36	42	46	48	54	60
A		16.08	18.78	20.33	24.21	28.74	41.2	39.4	45.7	50.1
B		17.64	20.39	24.04	27.24	34.06	41.8	34.8	39.2	41.8
C		3.74	4.33	3.74	5	5.12	5.91	5.91	7.87	7.87
L		8	8	12	12	12	15	15	15	15

# AWWA C504 DOUBLE FLANGE BUTTERFLY VALVE

CLASS 150 F13A-150

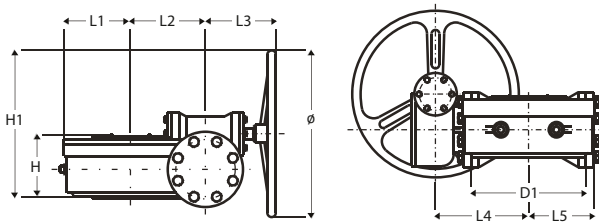


## Cast Iron 1-Stage Worm Gear and Handwheel Carbon Steel Gear Box Shaft



VALVE DIAMETER	D1	Ø	H	H1	L1	L2	L3
DN80	65	150	33	70	216	45	127
DN100 - DN150	90	150	33	70	216	45	127
DN200 - DN250	125	285	36	76	303	63.5	170
DN300 - DN350	125	285	40	79	300	80	190
DN400	175	385	79	232.5	300	80	190
DN450 - DN500	175	390	108	251	397/427	120	279

## Cast Iron 2-Stage Worm Gear and Handwheel Carbon Steel Gear Box Shaft



VALVE DIAMETER	D1	Ø	H	H1	L1	L2	L3	L4	L5
DN400 - DN500	175	285	125	271	107	100	156	168	107
DN600	210	285	125	271	107	100	156	168	107
DN750	300	425	149	378	146	140	197	230	146
DN900 - DN1050	300	425	185	409	201	196	203	279	201
DN1150 - DN1200	350	425	216	423	185	240	203	311	255
DN1350	415	510	267	553	208	345	258	435	355
DN1500	415	510	312	562	316	410	237	450	425

### INSTALLATION & OPERATION GUIDE

1. Ensure sufficient space for valves for easy installation, operation, maintenance and replacement.
2. Verify the valves are suitable for the operating condition such as medium, operating pressure / temperature, etc.
3. Check the I.D. of the flange and pipe to ensure free disc movement.
4. Valves shall be mounted on flanges only after the counter flanges have been welded to pipe and cooled down to the atmospheric temperature. Welding heat may damage the rubber seat of the valves. Never weld the flanges with valves installed. No gasket is required for installation of rubber seated butterfly valves.
5. Position the valves carefully between flanges. Accurate centering between flanges is essential to prevent any damages and problems during operation.
6. Valves should be installed by placing bolts through the hole and tightening carefully, ensuring even contact between the flange and seat. Too tight of space may cause damages to the seat and should be avoided.
7. Cross tighten all the bolts diagonally to distribute the loads evenly over the valves.
8. Turning the valves to ensure sufficient disc clearance.
9. Valves equipped with manual operators must be operated manually. Excessive external force on the operation of valve may damage the valve and / or operator.
10. Blind flange with short pipe should be used for dead end installation.