

DOUBLE FLANGE BUTTERFLY VALVE

PN16 V13C16



FEATURES & SPECIFICATIONS

- Concentric double flange
- Comply with BS EN593 / BS 5155 (Double flange short body) / ISO 5752 / EN 558-1 Basic Series 13 (Double flange short body) / MSS SP-67
- Higher strength for disc with pinned single shaft ensure optimal alignment
- Can be installed at horizontal or vertical pipe line
- Flange drilled to BS 4504 PN16 / EN1092-2 PN16 / ANSI Class 150 / JIS10K / AS 2129 Table E (Specify on order)

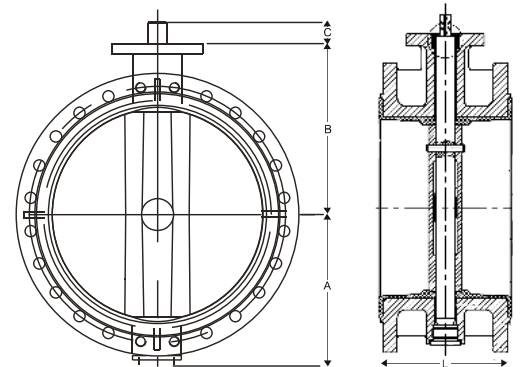


PRESSURE & TEMPERATURE RATINGS

Working Pressure	16bar
Shell Test Pressure (x1.5)	24bar
Seat Test Pressure (x1.1)	17.6 bar
Working Temperature	-20°C ... 110°C (EPDM) -10°C ... 80°C (NBR)
Suitable Media	Water, Oil & Gas

MATERIAL SPECIFICATIONS

Part	Material
Body	Ductile Iron
Disc	Ductile Iron Aluminum Bronze Stainless Steel 304 Stainless Steel 316
Stem	Stainless Steel 410 Stainless Steel 431
Seat Ring	EPDM NBR
O-Ring	EPDM NBR
Bushing	Bronze



DIMENSIONS

DN		(mm)													
(mm)	(inch)	50	65	80	100	125	150	200	250	300	350	400	450	500	600
		2	2½	3	4	5	6	8	10	12	14	16	18	20	24
	A	82.5	92.5	100	110	125	142.5	170	202.5	230	260	290	320	357.5	430
	B	127.5	136	146	156	176	186.5	226	274	304	330	340	400	500	535
	C	56	56	56	56	56	56	70	70	76	76	107	107	107	135
	L	108	112	114	127	140	140	152	165	178	190	216	222	229	267

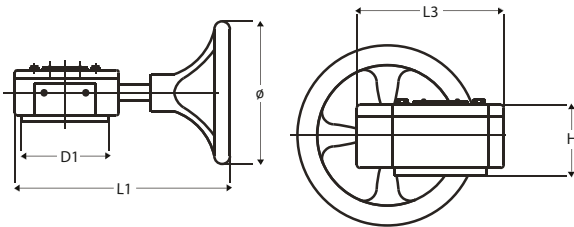
DN		(mm)													
(mm)	(inch)	700	800	900	1000	1200	1300	1350	1400	1500	1600	1800	2000	2200	2400
		28	32	36	40	48	52	54	56	60	64	72	80	88	96
	A	507	573	634	693	789	968	1066	1055	1025	1041	1164	1350	1430	1610
	B	560	620	692	735	917	990	1046	1000	1060	1150	1200	1360	1500	1650
	C	130	130	150	150	150	200	200	200	200	200	200	200	300	300
	L	292	318	330	410	470	490	490	530	570	600	670	760	800	850

DOUBLE FLANGE BUTTERFLY VALVE

PN16 V13C16

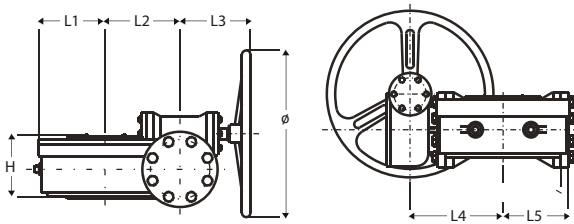


Cast Iron 1-Stage Worm Gear and Handwheel Carbon Steel Gear Box Shaft



VALVE DIAMETER	D1	ø	H	L1	L3
DN50 - DN80	65	150	33	216	127
DN100 - DN150	90	150	33	216	127
DN200 - DN250	125	285	36	303	170
DN300 - DN350	125	285	40	300	190
DN400	175	385	79	300	190
DN450 - DN500	175	390	108	397/427	279

Cast Iron 2-Stage Worm Gear and Handwheel Carbon Steel Gear Box Shaft



VALVE DIAMETER	ø	H	L1	L2	L3	L4	L5
DN400 - DN500	285	125	107	100	156	168	107
DN600	285	125	107	100	156	168	107
DN700 - DN800	425	149	146	140	197	230	146
DN900 - DN1000	425	185	201	196	203	279	201
DN1200	425	216	185	240	203	311	255
DN1300 - DN1400	510	267	208	345	258	435	355
DN1500 - DN1600	510	312	316	410	237	450	425
DN1800	510	326	360	460	237	466	475
DN2000	600	480	410	602	265	725	630
DN2200 - DN2400	600	570	442	696	364	742	726

INSTALLATION & OPERATION GUIDE

1. Ensure sufficient space for valves for easy installation, operation, maintenance and replacement.
2. Verify the valves are suitable for the operating condition such as medium, operating pressure / temperature, etc.
3. Check the I.D. of the flange and pipe to ensure free disc movement.
4. Valves shall be mounted on flanges only after the counter flanges have been welded to pipe and cooled down to the atmospheric temperature. Welding heat may damage the rubber seat of the valves. Never weld the flanges with valves installed. No gasket is required for installation of rubber seated butterfly valves.
5. Position the valves carefully between flanges. Accurate centering between flanges is essential to prevent any damages and problems during operation.
6. Valves should be installed by placing bolts through the hole and tightening carefully, ensuring even contact between the flange and seat. Too tight of space may cause damages to the seat and should be avoided.
7. Cross tighten all the bolts diagonally to distribute the loads evenly over the valves.
8. Turning the valves to ensure sufficient disc clearance.
9. Valves equipped with manual operators must be operated manually. Excessive external force on the operation of valve may damage the valve and / or operator.
10. Blind flange with short pipe should be used for dead end installation.